



UNIVERSITÄTS-
BIBLIOTHEK
PADERBORN

Reise-Skizzen

Hehl, Christoph

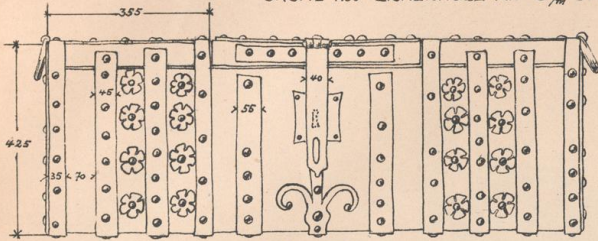
Berlin, 1899

Marburg 18.

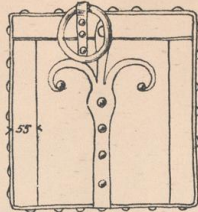
[urn:nbn:de:hbz:466:1-72815](https://nbn-resolving.org/urn:nbn:de:hbz:466:1-72815)

S. ELISABETHKIRCHE

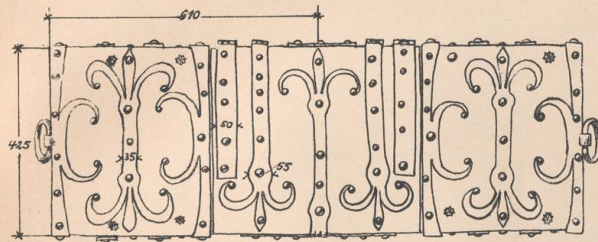
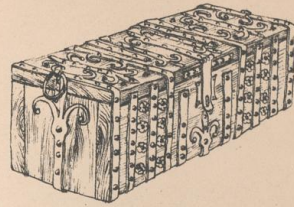
TRÜHE • AUS • EICHENHOLZ • MIT • 3⁷/₁₆ • STÄRKE • EISEN • BESCHLAGEN • 1:10 • HK



• VORDERANSICHT •

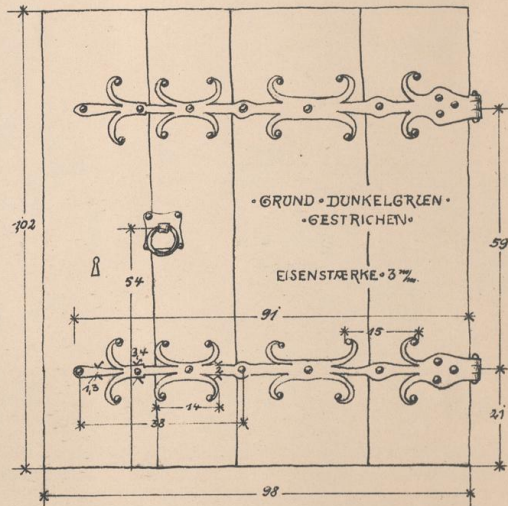


• SEITENANSICHT •



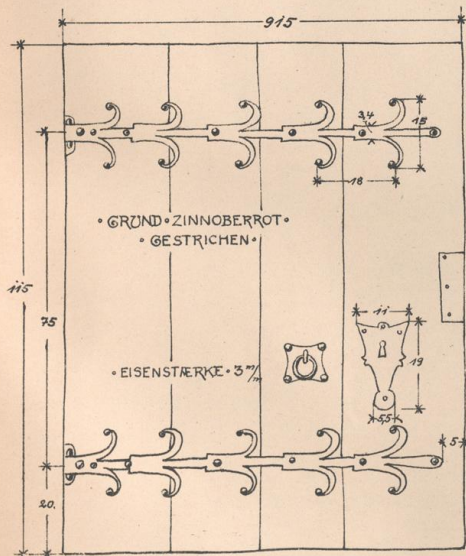
• AUFSICHT •

• WANDSCHRANK • 1:10 • HK



• GRUND • DUNKELGRÜN •
• GESTRICHEN •

EISENSTÄRKE • 3⁷/₁₆

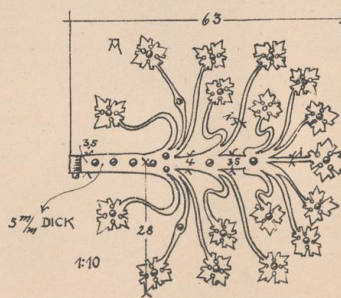


• GRUND • ZINNOBERROT •
• GESTRICHEN •

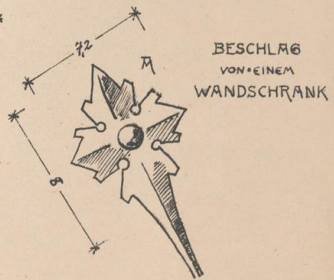
EISENSTÄRKE • 3⁷/₁₆

• WANDSCHRANK • 1:10 • HK

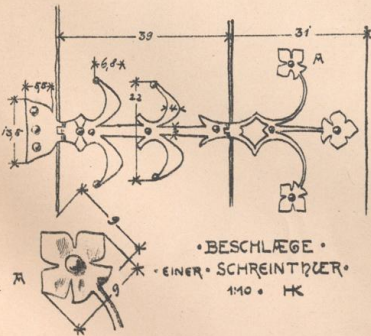
• THÜRRING • 1:5



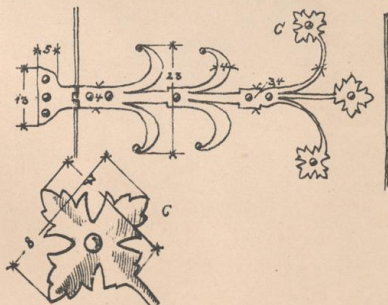
1:10



BESCHLAG
VON EINEM
WANDSCHRANK



• BESCHLÄGE •
• EINER • SCHREINTÜR •
1:10 • HK



• THÜRRING • UND • SCHLÜSSELBLECH •
• EINER • WANDSCHRANKES •
1:5

Kunstanst. von Ernst Wasmuth, Berlin

5

6

7

8

35

4

54

4

28

4

44

4

67

4

77

4

443

4

4

4